



Professional Development Programme

January 2020 – December 2020

CONTENTS

Foreword by Dr Russell Wate, QPM, Independent Chair	2
Introduction and Welcome by Jo Procter – Head of Service	3
Comments from Evaluation Forms 2019	4
How to Book on to courses	5-6
Code of Conduct	7
Groups and Course Levels (Children)	8-9
Groups and Course Levels (Adults)	10-11
Training Venues	12
Children's Training Calendar	14-15
Adults Training Calendar	24
Children and Adults Training Calendar	30
Workshops	38
Leaflets and Resources	39
Cambridgeshire and Peterborough Safeguarding Partnership Board Training – Contact details	40

FOREWORD



I have great pleasure in introducing to you, this professional development programme for the Safeguarding Partnership Boards. This combined programme includes courses for those working with both children and adults in the Cambridgeshire and Peterborough area. The training period for the programme covers the period from January 2020 until December 2020. It is felt that using this as a time period works well and as it covers the calendar year. The programme outlines the list of courses that we as a safeguarding Partnership Board are providing during this period. The courses fit exactly, to what the board priorities in Cambridgeshire and Peterborough are for keeping children safe and promoting their welfare, and also those adults in need of care and protection. These Board priorities came about after wide consultation with the multi-agency partners, but also as importantly with children, young people and care providers in Peterborough and Cambridgeshire. Another key area that has helped the board to identify training and learning priorities is through Serious Case Reviews (children) and Safeguarding Adult Reviews that we have completed during the last year. We have only one goal, and that is how we can improve individual practitioner's skills to safeguard children and adults in need of care and support. Training is a key part of ensuring that the staff in Cambridgeshire and Peterborough who work with the children, young people and adults are equipped to keep them safe.

The courses are of the highest standard led by suitably skilled, qualified and experienced trainers, facilitators and subject matter experts. Places on the training courses last year were in high demand, and as result we encourage practitioners who would benefit from the courses being offered, to enrol at their earliest opportunity. We do want to make sure the training is fit for purpose, and is meeting the intended need, so will be asking all delegates to complete the evaluation forms.

I would like to thank, Isabel Iglesias Vizoso for her hard work in coordinating the training programme. Also thank you to all of our professionals who have helped deliver programmes through the year.

I commend the programme to you, and hope all that participate gain great value.

Dr Russell Wate QPM - Independent Chair of Cambridgeshire and Peterborough Safeguarding Children and Adults Partnership Boards

INTRODUCTION & WELCOME



Welcome to the second joint Cambridgeshire and Peterborough Safeguarding Children and Adults Partnership Boards Multi-agency Professional Development Programme.

Everyone shares a responsibility for safeguarding, protecting and promoting the welfare of children and adults, irrespective of their individual roles. To ensure that organisations and practitioners collaborate effectively, it is vital that all partners who work with children and adults are aware of, and appreciate, the role that each of them has to play in safeguarding.

The aim of all of Safeguarding Board Partnership training is to assist staff to achieve better outcomes by:

- a shared understanding of the tasks, processes, roles and responsibilities to safeguard and protect children, young people and adults
- improved communication and information sharing between professionals including a common understanding of key terms, definitions and thresholds for action.

Research has shown that multi-agency training is highly effective in helping professionals understand their respective roles and responsibilities, the procedures of each agency involved in safeguarding, and in developing a shared understanding of assessment and decision-making practices.

Furthermore, the opportunity to learn together is greatly valued; participants report increased confidence in working with colleagues from other agencies and greater mutual respect.

It is the aim of the Cambridgeshire and Peterborough Safeguarding Partnership Boards to provide and commission high quality training in a safe and reflective learning environment which ensures that the need for multi-agency working to safeguard protect and promote the welfare of children and adults is addressed.

All the learning and development opportunities you find in this professional development training programme focus on supporting those professionals working at various levels of responsibility for safeguarding children and adults. The training is aimed to equip all staff with the knowledge and skills required to safely and effectively in partnership with other agencies.

We hope you find the learning opportunities worthwhile and relevant to your safeguarding role and we look forward to meeting you at future training events.

Jo Procter

Head of Service

Cambridgeshire and Peterborough Safeguarding Children and Adults Partnership Boards

A great informative course that really made me think about our practice and that of other services

Trainers were outstanding - contents and delivery excellent

Good delivery - trainer very knowledgeable. Best adult safeguarding course I have been on to date

Fab trainers! Knowledgeable, resources, shared experiences

Enjoyable, informative course. Excellent course trainer - making it clear with opportunities to ask questions

I like the way the course was done. Very useful trainer, made it very relatable to real life scenarios.

I found the training excellent. Well presented, lots of discussion and good materials

HOW TO BOOK

All applications for courses must be completed via booking bug.

- One application form (via booking bug) must be completed per applicant per course (Applications for more than one course per form will not be processed).
- All applications must be authorised by a line manager – where line manager approval is not required, this must be reflected on the application form and the reason why clearly stated (i.e. for some voluntary services).

Please note that we cannot accept bookings by telephone. For general enquiries regarding Safeguarding Partnership Boards Training, please call the Safeguarding Boards Business Unit on (01733) 863747.

HOW TO USE BOOKING BUG - VIA WEBSITE

All courses must be booked via Booking Bug from the Safeguarding Partnership Boards Website. **(Please note we cannot accept bookings by telephone or by email).** The website address is:

<http://safeguardingcambspeterborough.org.uk/availabletraining/>

Scroll down the page until you see the links to Children's Training, Adults Training, Children and Adults training or General Practitioner training. Click book next to the chosen link.

The booking Bug Calendar will appear showing all the available courses.

Click on the **book** button next to the course you wish to book onto. If the button next to the course says **wait**, then the course is full and you can apply to be placed on the waiting list.

Please complete the information required. **Please note the information contained on the form, including the email address, must be that of the applicant.**

Click 'next'. ***You do not need to create a password to continue.**

Complete the application, either with typing or picking from the drop down boxes.

When entering the address, it needs to be road names, town and postcode. If this is not filled in correctly this could affect your placement on the course.

Click Confirm. This is the confirmation your booking has been completed and you have been placed onto the course or the waiting list. You will then receive an emailed confirmation directly from the booking system. (If you do not receive this, it is likely you have entered your email address incorrectly on the booking system.

Note: Please do not click on the book calendar buttons as this is not controlled by the Safeguarding Boards. If the course is cancelled, the entry will be still in your calendar as we do not delete the booking from the system.

Please note that bookings will be monitored, as this is multi-agency training we need to have a variety of different agencies attending, if there are too many from the same agency places may be cancelled.

For general enquiries regarding Safeguarding Partnership Boards Training, please call the Safeguarding Boards Business Unit on (01733) 863747.

VENUES -

Unless otherwise advised all training will be held at various locations across Cambridgeshire. Please ensure that you check your reminder emails for details as to timings and venue. Tea/coffee will be provided at all training sessions. **Lunch is not provided at any training.**

Please see page 12 for a full list of venues used for our training.

CERTIFICATE OF ATTENDANCE

Certificates of Attendance will only be issued to delegates if they attend the whole of the training course and once they have completed the Impact of Training Review which they should receive approximately six weeks after the training session. Please be aware that if delegates arrive late or leave early, they may not be awarded a Certificate of Attendance.

COURSE MATERIALS

Some courses may have pre-course literature which will be sent via email in advance for you to print off and take with you to the Training event. Please check your delegate confirmation details carefully.

COST

Safeguarding Partnership Board training is free to all agencies who contribute to the Safeguarding Partnership Boards budget (See list below). At the discretion of the Head of Service of the Safeguarding Boards, agencies who contribute to the Safeguarding Boards “in kind” will be allocated free places on Safeguarding Boards Training. For those agencies who do not contribute the following fees apply:

£175 per person for a full-day course, £90 per person for a half-day course and £45 for a two hour course. The following agencies contribute to the Safeguarding Partnership Boards Budget

- Peterborough City Council
- Cambridge County Council
- Cambridgeshire and Peterborough Clinical Commissioning Group
- NHS England
- North West Anglia NHS Foundation Trust
- Cambridge University Hospitals NHS Trust
- Cambridgeshire Community Services,
- East of England Ambulance Trust
- Royal Papworth Hospital NHS Foundation Trust

- Cambridgeshire and Peterborough Foundation Trust
- Cambridgeshire Constabulary
- National Probation Service
- CAFCASS

Free training is also available to the following non-contributing agencies:
Education—including nursery, pre-school

COURSE CONFIRMATION

A week prior to the date of the training you will be sent a reminder email with directions. Should you be unsuccessful for your preferred date, you will be offered an alternative date for your chosen course or you will be added to the waiting list.

CANCELLATION

Places on courses are limited, so please inform the Safeguarding Partnership Boards Office by **EMAIL ONLY** to safeguardingboardstraining@cambridgeshire.gov.uk at least 2 working days before the course date if you are unable to attend; otherwise a non-attendance charge will apply as follows:

£100 for a full day course and £50 for a half day course.

For non-attendance on the day of the course, the Cambridgeshire and Peterborough Safeguarding Partnership Boards will follow up with delegates and line managers to ascertain the reason for non-attendance. In all cases it is important to advise the Business Support Officer for Training on tel. 01733 863747 or email: safeguardingboardstraining@cambridgeshire.gov.uk if you are off work unexpectedly and are unable to attend.

PLEASE DO NOT ATTEND TRAINING UNLESS YOU HAVE RECEIVED A REMINDER EMAIL (these are sent a week prior to the course). IF YOU CANNOT ATTEND, PLEASE DO NOT GIVE YOUR PLACE TO ANYONE ELSE AS THERE ARE WAITING LISTS FOR ALL COURSES. YOU MAY BE ASKED TO SHOW A COPY OF YOUR REMINDER/CONFIRMATION EMAIL AT THE TRAINING SESSION.

ANYONE ATTENDING WITHOUT BOOKING WILL BE CHARGED THE FULL COST OF THE COURSE.

DATA PROTECTION

All of the information on the applications forms are kept on a Safeguarding Boards database for future Safeguarding Boards Training reference purposes and contact regarding evaluation of the Safeguarding Boards training, certificates for attendance and any charges. Should you wish to receive any Safeguarding Boards flyers regarding future Safeguarding Boards training, conferences and local practice groups you must let the Safeguarding Partnership Boards Business Support Unit know to add your details to our communication lists.

Please note all dates, venues and times though correct at the time of publication are subject to change. We will make participants aware if a change takes place.

CODE OF CONDUCT

In order for all participants to get the most from the training opportunities, please follow the code of conduct below:

- Please arrive on time.
- Please inform the trainer / facilitator if it is essential for your mobile phone to remain switched on (in silent mode)
- Be prepared to discuss the learning topic with colleagues, whilst ensuring confidentiality at appropriate times during the session.
- Reflect on the session and offer valuable comments by completing the evaluation form.
- Please do not attend a training course unless you have booked on to the course through the Safeguarding Partnership Boards process and received confirmation of your place or you may be asked to leave.

We want the learning experience to be effective, challenging and worthwhile. Therefore we will aspire to:

- Ensure that the facilitator is punctual, prepared and receptive to discussion and debate.
- Provide a learning experience that is relevant and informative which will enhance your prior knowledge and skills.
- Provide training which places the child/adult at the centre and promotes the importance of prioritising their needs.
- Ensure that all training creates an ethos that values working collaboratively with others, respects diversity, promotes equality and encourages the participation of children, vulnerable adults and families in the safeguarding processes.
- Provide an environment that promotes learning.

LEVELS OF TRAINING APPLICABLE TO SAFEGUARDING CHILDREN TRAINING

To ensure that multi-agency training is being accessed by the correct practitioners Working Together 2010 describes target audiences (Groups 1-8). These groups do not correspond to vocational or academic qualifications. It is the role of your manager to determine what training you should access.

Group 1	Staff who are in infrequent contact with children, young people and/or parents/carers.
<p>This group of staff need a 'basic' understanding and 'awareness' of safeguarding issues, know how to recognise child abuse, know what normal child development is and to know what to do if they suspect a child is being abused.</p> <p><u>Staff include:</u> Librarians, GP Receptionists, community advice centre staff, groundsmen, recreation assistants, and environmental health officers.</p>	
Group 2	Those in regular contact or have a period of intense but irregular contact, with children, young people and /or parents/carers including all clinical health staff.
<p>In addition to basic understanding and awareness of safeguarding issues, this group of staff need to have an awareness of the necessity of information sharing or referral process accurate recording, knowledge of how to use the escalation policy and an appreciation of their own roles and responsibilities to safeguard children.</p> <p><u>Staff include:</u> Housing, hospital staff, the police other than those is specialist child protection roles, sports development officers, disability specialists, faith groups, community youth groups, play scheme volunteers.</p>	
Group 3	Members of the workforce who work predominantly with children, young people and/or their parents/carers.
<p>In addition to the skills needed for Groups 1 and 2 within this group need to be aware of the importance of family history, the impact of parenting issued and of working together to identify, assess and meet the needs of children where there are safeguarding issues.</p> <p><u>Staff include:</u> Paediatricians, GP's, youth workers, those working the early years sector, residential staff, midwives, school nurses, health visitors, sexual health staff, teachers, probation staff, sports club welfare officers, those working with adults in, for example, learning disability, mental health, alcohol and drug misuse services, those working in community play schemes.</p>	
Group 4	Members of the workforce who have particular responsibilities in relation to undertaking section 47 enquiries.
<p>This group of staff need to have the skills needed for the above groups and need to have an awareness of section 47 enquiries, taking emergency action, professional judgements and working with complexity and a greater understanding or engagement with children and families.</p> <p><u>Staff include:</u> Professionals from health, education, police and children's social care, those who work with complex cases and social work staff responsible for co-ordination assessments of children in need.</p>	
Group 5	Professional advisors, named and designated lead professionals
<p>In addition to the content for Groups 1, 2, 3 and 4 this group of staff need to (if they are advising these groups of staff) have an understanding of promoting effectiveness, professional practice and giving advice to others</p> <p><u>Staff include:</u> Designated Lead Professionals.</p>	

FOR HEALTH PROFESSIONALS

All of the training offered within this brochure is multi-agency training and not agency specific. All Health professionals, as with other single agencies, are required to access the appropriate level of training specific to and within their own agency. Listed below is a guide to how the Intercollegiate Levels, within the health map onto the 'Working Together' Groups.

- Intercollegiate Level 1 – Access Groups 1 and 2 training courses
- Intercollegiate Level 2 – Access Groups 2 and 2 training courses
- Intercollegiate Level 3 – Access Group 3 training courses
- Intercollegiate Level 4 and 5 – Access Group 3 Training courses.

Cambridgeshire and Peterborough Safeguarding Boards only provide training which is multi-agency and is designed to support the needs of a complex multi-disciplinary workforce and may not necessarily meet any one agency's internal requirements for compliance with professional standards. Identifying which individual course meets which interagency level is a matter for you to discuss within supervision and with the support of your safeguarding leads within your organisation. Your attendance is greatly valued and we would seek to be flexible and supportive where we can. However, please be aware that we may not be able to accommodate your specific and individual training needs if it prevents us providing multi-agency training to **all** agencies at the required standard.

LEVELS OF TRAINING APPLICABLE TO SAFEGUARDING ADULTS TRAINING

To ensure that multi-agency training is being accessed by the correct practitioners the table below describes target audiences (Groups 1 -8). These groups do not correspond to vocational or academic qualifications and are for SAB multi-agency training and single agency safeguarding adult training endorsement only.

Group 1	Staff who are in infrequent contact with adults at risk
<p>This group of staff need a 'basic' understanding and 'awareness' of safeguarding issues, know how to recognise adult abuse and neglect, know about making safeguarding personal, the mental capacity act, deprivation of liberty and know what to do if they suspect an adult at risk is being abused.</p> <p>Staff include: all support staff in health and social care settings, GP receptionists, Drivers and other transport staff, clerical staff, domestic and ancillary staff.</p>	
Group 2	Those in regular contact or have a period of intense but irregular contact, with adults at risk including all clinical health staff
<p>In addition to basic understanding and awareness of safeguarding issues this group of staff need to have an awareness of the necessity of information sharing, consent, assessment, accurate recording, knowledge of how to use the escalation/resolution policy and an appreciation of their own roles and responsibilities to safeguard adults at risk.</p> <p><u>Staff include:</u> Housing, hospital staff, staff in secure settings, the police, sports developments officers, disability specialists, faith groups.</p>	
Group 3	Members of the workforce who work predominantly with adults at risk
<p>In addition to the skills needed for Groups 1 and 2 staff within this group need to be aware of the importance of family history and of working together to identify, assess and meet the needs of an adult at risk where there are safeguarding issues</p> <p><u>Staff include:</u> GP's, those working in the sector, residential staff, district nurses, sexual health staff, further education staff, probation staff, sports club welfare officers, those working with adults in, for example, learning disability, mental health, alcohol and drug misuse services</p>	
Group 4	Members of the workforce who have particular responsibilities in relation to undertaking section 42 enquiries
<p>This group of staff need to have the skills needed for the above groups and need to have an awareness of section 42 enquiries, taking emergency action, professional judgements, working with complexity and a greater understanding of engagement with adults at risk and their families.</p> <p><u>Staff include:</u> Professionals from health, police and adult social care, those who work with complex cases and social work staff responsible for coordinating assessments of adults at risk.</p>	
Group 5	Professional advisors, named and designated lead professionals
<p>In addition to the content for Groups 1,2,3 and 4 this group of staff need to (if they are advising these groups of staff) have an understanding of promoting effectiveness, professional practice and giving advice to others</p> <p><u>Staff include:</u> Designated Lead Professionals</p>	

TRAINING VENUES

TRAINING VENUES

All venues below have a link to directions.

PETERBOROUGH VENUES

[Peterborough Education Conference Centre, 1st Floor Central Library, Broadway, Peterborough, PE1 1RX](#)

[Deafblind UK, John & Lucille van Geest Place, Cygnet Rd, Peterborough PE7 8FD](#)

[Weston Homes Stadium, Peterborough United FC, London Rd, Peterborough PE2 8AL](#)

CAMBRIDGE VENUES

[Cambridgeshire Football Association, Bridge Road ☐ Impington ☐ Cambridge ☐ CB24 9PH](#)

[The Meadows Community Centre, 1 St Catharine's Rd, Cambridge CB4 3XJ](#)

HUNTINGDON VENUES

[Huntingdonshire Football Association, Ambury House, Sovereign Ct, Huntingdon PE29 6XU](#)

[Hinchingbrooke Country Park, Brampton Rd, Huntingdon PE29 6DB](#)

[Stanton House, Stanton Way, Huntingdon PE29 6XL](#)

MARCH VENUES

[Young People March Community Centre, 34 Station Rd, March PE15 8LE](#)

ELY VENUES

[Ely Diocese, Bishop Woodford House, Barton Rd, Ely CB7 4DX](#)

SAFEGUARDING CHILDREN COURSES

Children's Courses Calendar

Date	Course	Venue	Pg
JANUARY 2020			
17.01.20	Early Help – Back to Basics	Peterborough Education Conference Centre	18
29.01.20	Introduction to Neglect	Hinchingbrooke Country Park	16
FEBRUARY 2020			
05.02.20	Using the Quality of Care Tool to Assess Neglect	Peterborough Education Conference Centre	17
07.02.20	Introduction to Child Criminal Exploitation	Peterborough Education Conference Centre	19
26.02.20	Introduction to Safeguarding Children	Peterborough Education Conference Centre	16
26.02.20	Outcome Star	Peterborough Education Conference Centre	18
MARCH 2020			
11.03.20	Safer Recruitment	Peterborough Education Conference Centre	21
13.03.20	Your Role in the Child Protection Process	Peterborough Education Conference Centre	20
16.03.20	Working with Child Criminal Exploitation	Hunts FA	19
24.03.20	Safeguarding Children and Working with Eastern and Central European Families	Hunts FA	22
27.03.20	Safeguarding Children For General Practitioners – Level 3	Cambs FA	20
APRIL 2020			
22.04.20	Introduction to Safeguarding Children	Cambs FA	16
23.04.20	Fabricated and Induced Illness	Peterborough Education Conference Centre	21
24.04.20	Early Help – Back to Basics	Peterborough Education Conference Centre	18
29.04.20	Introduction to Neglect	Cambs FA	16
JUNE 2020			
02.06.20	Introduction to Safeguarding Children	Peterborough Education Conference Centre	16
02.06.20	Graded Care Profile	Cambs FA	17
02.06.20	Safeguarding Children For General Practitioners – Level 3	Deafblind UK	20
09.06.20	Safeguarding Children and Working with Eastern and Central European Families	Cambs FA	22
17.06.20	Safeguarding Children from Online Abuse	Hunts FA	22
18.06.20	Outcome Star	Peterborough Education Conference Centre	18
22.06.20	Introduction to Child Criminal Exploitation	The Meadows Community Centre	19
JULY 2020			
03.07.20	Early Help – Back to Basics	Peterborough Education Conference Centre	18
10.07.20	Working with Child Criminal Exploitation	Peterborough Education Conference Centre	19
SEPTEMBER 2020			
08.09.20	Safeguarding Children For General Practitioners – Level 3	Cambs FA	20
09.09.20	Introduction to Safeguarding Children	The Meadows Community Centre	16
10.09.20	Using the Quality of Care Tool to Assess Neglect	Peterborough Education Conference Centre	17

21.09.20	Introduction to Child Criminal Exploitation	The Meadows Community Centre	19
22.09.20	Safeguarding Children from Online Abuse	The Meadows Community Centre	22
29.09.20	Introduction to Neglect	Peterborough Education Conference Centre	16
OCTOBER 2020			
06.10.20	Graded Care Profile	Hunts FA	17
15.10.20	Safer Recruitment	Peterborough Education Conference Centre	21
19.10.20	Fabricated and Induced Illness	Young People March Community Centre	21
NOVEMBER 2020			
03.11.20	Introduction to Safeguarding Children	Hunts FA	16
06.11.20	Early Help – Back to Basics	Peterborough Education Conference Centre	18
13.11.20	Your Role in the Child Protection Process	Peterborough Education Conference Centre	20
18.11.20	Outcome Star	Peterborough Education Conference Centre	18
20.11.20	Working with Child Criminal Exploitation	The Meadows Community Centre	19
DECEMBER 2020			
03.12.20	Safeguarding Children and Working with Eastern and Central European Families	Peterborough Education Conference Centre	22
08.12.20	Safeguarding Children For General Practitioners – Level 3	Deafblind UK	20
08.12.20	Safeguarding Children from Online Abuse	Peterborough Education Conference Centre	22



An Introduction to Safeguarding Children

This training will be facilitated by Elizabeth Locke, Safeguarding Boards Trainer, Cambridgeshire and Peterborough Safeguarding Children and Adults Partnership Boards

Please be aware that the course will have explicit content which some participants may find distressing

Aims & Learning Outcomes: To address the knowledge and skills that are necessary for identifying and responding appropriately to concerns about safeguarding children and Young People.

By the end of the training session participants will be able to:

- Understand and recognise what is meant by safeguarding children & the different ways children and young people can be harmed and neglected
- Describe the first steps to take if they are concerned about a child
- Respond appropriately to a disclosure made by a child
- Understand the necessity for information sharing and accurate recording and logging concerns
- State what to do if they experience barriers to referring a child/family
- Know the boundaries of personal competence and responsibilities and where to seek advice and support from a manager/designated person
- Recognise parental factors that might have an impact on how children are parented

Target Audience This is a three-and-a-half-hour training course exploring the very 'basic' knowledge and skills needed, by those who work with children, young people and families, for safeguarding children and young people.

This course is for those professionals who do not have access to their own agency's training in relation to basic Safeguarding Training (Group 1). This course is not appropriate as a Safeguarding refresher course. The training will focus on all aspects of safeguarding and child protection enabling practitioners to be able to act appropriately if they suspect a child is being abused.

Both Cambridgeshire and Peterborough practitioners		
Date	Venue	Time
26.02.20	Peterborough Education Conference Centre	10-14.00
22.04.20	Cambs FA	09.30-13.30
02.06.20	Peterborough Education Conference Centre	10.00-14.00
09.09.20	The Meadows Community Centre	09.30-13.30
03.11.20	Hunts FA	10.00-14.00

An Introduction to Neglect

This training will be facilitated by Elizabeth Locke, Safeguarding Boards Trainer, Cambridgeshire and Peterborough Safeguarding Children and Adults Partnership Boards

Please be aware that the course will have explicit content which some participants may find distressing

Aims & Learning Outcomes: An Introduction to help practitioners to recognise and respond to the signs and symptoms of child neglect and ensure that the needs of children and young people are assessed in order to prevent long term consequences on their health and welfare.

At the end of the session delegates will have had an opportunity to:

- Be able to recognise and respond to the signs and symptoms of child neglect
 - Understand the long-term consequences of neglect on children and young people
 - Understand why parents are not always able to meet the basic needs of their children
 - Be aware of the tools that are used to assess neglect
- **Target Audience** This half day course, is at a basic introductory level for those practitioners who have no knowledge of child neglect. (Group 1).

Both Cambridgeshire and Peterborough practitioners		
Date	Venue	Time
29.01.20	Hinchinbrooke Country Park	09.30-13.30
29.04.20	Cambs FA	09.30-13.30
29.09.20	Peterborough Education Conference Centre	10.00-14.00

Using the Quality of Care Tool to Assess Neglect

This training will be facilitated by Alison Wallace Safeguarding Children's Lead for the Cambridgeshire and Peterborough Safeguarding Children and Adults Partnership Boards

Aims & Learning Outcomes: To give practitioners the opportunity to use the QOC Tool in a multi-agency setting in order to increase their confidence and to use the tool as an aid to assessing neglect in children and young people.

By the end of the workshop practitioners will:

- Understand the theory behind the tool;
- Be able to use the tool effectively in the assessment of neglect;
- Be more confident in the assessment of neglect.

Target Audience: Appropriate for any professionals working directly with children and their families within the home or other settings. (Social workers, health visitors, school nurses, community nursery nurses, specialist children's nurses, children centre workers, schools). Groups 3-5

Peterborough Practitioners only		
Date	Venue	Time
05.02.20	Peterborough Education Conference Centre	09.30-11.30
10.09.20	Peterborough Education Conference Centre	09.30-11.30

Graded Care Profile

This training will be facilitated by Frances Macklin, Children's Service Manager from Cambridgeshire County Council Karen Hunt, Senior Family Worker from Cambridgeshire County Council

Aim and Learning Outcomes: Where neglect of children is identified as a factor within the family, to enable professionals to;

- Use the new format Graded Care Profile (GCP) to assess the extent of neglect, and to monitor and evidence any improvement or deterioration.
- Identify / evidence any child protection and safeguarding concerns.
- To use the GCP to prepare and plan interventions for working with children, young people and families to address concerns around neglect to support realistic and sustainable changes.
- Identify when progress is not being made and the possible reasons for this.
- Understand the evidence that the Graded Care Profile could provide within a referral.

Target Audience: This half a day course is primarily for those professionals (statutory and voluntary) who either work predominately or who have regular contact with children and young people and for those who hold particular responsibilities for safeguarding. (Groups , ,3-5). The GCP is designed to be used by any professional in any agency working with a family where there is a concern about the care of the children (0 – 17 years). It is relevant to Health Professionals, Early Help, Education, Think Family and Children Social Care.

Cambridgeshire Practitioners Only		
Date	Venue	Time
02.06.20	Cambs FA	09.30-13.30
06.10.20	Hunts FA	09.30-13.30

Outcome Star Training

This training will be facilitated by Samantha Turner Connecting Families Lead, Early Help, Peterborough City Council.

Aim and Learning Outcomes: This training session introduces the Outcome Star - a tool designed to help families, children, young people and adults see where they may need to make changes in their lives and then help them to make those changes. The Stars provide a strong visual representation of strengths and areas where families or individuals need support and illustrate where progress is being made and any areas that remain stuck. An understanding of how the Outcome Star can assist with the completion of a holistic needs assessment e.g. CAF

- By the end of this session participants will be able to:
- Introduce the appropriate star to children, young people and families
- Complete outcome stars with service users
- Illustrate to clients where progress is being made and areas that remain stuck
- Utilise a robust evaluation tool for identifying distance travelled
- Use the data collected from the stars to support evaluation of service
- Understanding of how the Outcome Star can assist with the completion of a holistic assessment e.g. CAF

Peterborough Practitioners only		
Date	Venue	Time
26.02.20	Peterborough Education Conference Centre	09.30-13.00
18.06.20	Peterborough Education Conference Centre	09.30-13.00
18.11.20	Peterborough Education Conference Centre	09.30-13.00

Early Help – Back to Basics

This training will be facilitated by Carol Dixon, a member of the Early Help Team at Peterborough City Council.

Aim and Learning Outcomes: This practical session aims to increase participant's knowledge and understanding of why we complete Early Help Assessments and the benefits these have in supporting families. It will also provide professionals with the relevant tools and guidance to develop their skills to apply to the Early Help process in order to construct a full and holistic assessment when working with children, young people and families.

By the end of this session, participants will be able to:

- List the benefits of the EHA process to children, young people, families and professionals;
- Describe the key aims and principles of a EHA assessment and how it can support children, young people and families at a targeted level within the community;
- Distinguish when it would be appropriate to undertake an EHA with a family and be equipped to complete the assessment;
- Support professionals in being able to identify key elements that produce a positive and holistic EHA
- Describe the purpose of a Team Around the Child (TAC) meeting, and additional outcomes of an EHA such as MASG Panel and Behaviour Panel
- Describe the core functions and responsibilities of the Lead Professional (point of contact) role;
- Identify the need for the Lead Professional role (point of contact) and determine who may be best placed to take up the role;
- Be aware of support available locally to access additional support and resolve disputes and disagreements.

Peterborough Practitioners only		
Date	Venue	Time
17.01.20	Peterborough Education Conference Centre	09.30-12.30
24.04.20	Peterborough Education Conference Centre	09.30-12.30
03.07.20	Peterborough Education Conference Centre	09.30-12.30
06.11.20	Peterborough Education Conference Centre	09.30-12.30

Introduction to Child Criminal Exploitation

The training will be facilitated by: Dave Sargent Partnership Strategic Lead (Criminal Exploitation), Cambridgeshire and Peterborough Safeguarding Children and Adults Partnership Boards

Please be aware that the course will have explicit content which some participants may find distressing.

Any child, young person or teenager could be at risk of Child Criminal Exploitation. This introductory course explores what is Child Exploitation (both Sexual Exploitation and gangs) what are the risks posed and how to safeguard our young people from exploitation

Aim and Learning Outcomes:

- To provide an awareness of :- what Child Exploitation is, the definition we use and to explore the different types/models of Child Exploitation
- To give participants an overview of the signs and indicators of Child Exploitation.
- Increased understanding of the legal framework surrounding CE and Child Abuse.
- Introduction to the referral process.

Target Audience: This course is primarily for those professionals (statutory and voluntary) who either work predominately or who have regular contact with children and young people; for those who hold particular responsibilities for safeguarding and for those who hold positions as professional advisors. Groups 2-5.

Both Cambridgeshire and Peterborough practitioners		
Date	Venue	Time
07.02.20	Peterborough Education Conference Centre	09.30-12.30
22.06.20	Hunts FA	09.30-12.30
21.09.20	The Meadows Community Centre	09.30-12.30

Working with Child Criminal Exploitation

The training will be facilitated by: Dave Sargent Partnership Strategic Lead (Criminal Exploitation), Cambridgeshire and Peterborough Safeguarding Children and Adults Partnership Boards

Delegates must have attended the Introduction to Child Sexual Exploitation course.

Aim and Learning Outcomes:

- To provide an awareness of the grooming processes involved in CCE and Child Sexual Abuse.
- To provide an awareness of "gangs" and county lines
- To explore the use of social media and technology used in CCE.
- To explore the Impact of CCE on children and young people.
- To enable delegates to improve their confidence and working practices in relation to using the joint referral form and risk management tool
- To introduce delegates to the management structure of cases within Cambridgeshire and Peterborough

Delegates will be shown the referral process and the completion of the risk management tool through a series of case studies and learning will be supported by a member of the Missing, Exploited and Trafficked (MET) hub who will be on hand to talk through next steps, responsibilities etc.

Target Audience: This Level 2 course is primarily for those professionals (statutory and voluntary) who either work predominately or who have regular contact with children and young people; for those who hold particular responsibilities for safeguarding and for those who hold positions as professional advisors. Groups 3-5.

Both Cambridgeshire and Peterborough practitioners		
Date	Venue	Time
16.03.20	Hunts FA	09.30-16.30
10.07.20	Peterborough Education Conference Centre	09.30-16.30
20.11.20	The Meadows Community Centre	09.30-16.30

Your Role in the Child Protection Process

The training will be facilitated by Gisela Jarman, Designated Officer for Allegation Management from the Conferencing and Review Service at Peterborough City Council

Aim and Learning Outcomes: To improve practitioners understanding of their role in a child protection conference.

By the end of the training session participants will:

- Begin to understand the concept of significant harm
- Begin to understand the multi-agency dimensions of child protection.
- Have contributed to writing a report for a mock child protection conference
- Have had an opportunity to participate and observe a “mock” child protection conference
- Understand the need to present information in an accurate and succinct way
- Understand the need to prepare parents/carers/children and young people to promote their meaningful participation in the conference
- Understand the purpose of Core Groups and your role with them

Target Audience: All Practitioners, Managers and Volunteers, who regularly work with children and young people and adults who are parents or carers and who may be asked to contribute to assessments of Children In Need or attend a child protection conference. Those attending should have previously completed Introductory Safeguarding. Groups 3,4 and 5.

Peterborough practitioners only		
Date	Venue	Time
13.03.20	Peterborough Education Conference Centre	09.30-16.30
13.11.20	Peterborough Education Conference Centre	09.30-16.30

Safeguarding Children Training for General Practitioners – Level 3

Aim and Learning Outcomes :

To deliver safeguarding children training to GP's to:

- Enable them to recognise and respond to concerns about the welfare of children and young people.
- Update their knowledge of particular safeguarding concerns and of the national and local context
- Enhance their understanding of their role within the wider multi-agency safeguarding system.

Target Audience: This training session is designed and aimed at all GP's across Peterborough and Cambridgeshire along with Practice Nurses and Senior Nurses within GP Practices (Level 3 Training).

Please note that there will be a charge of £50 per person

Both Cambridgeshire and Peterborough Practitioners		
Date	Venue	Time
27.03.20	Cambs FA	12.45-16.30
02.06.20	Deafblind Uk	13.15-17.00
08.09.20	Cambs FA	12.45-16.30
08.12.20	Deafblind Uk	13.15-17.00

Fabricated and Induced Illness

This training will be facilitated by Dr Russell Wate QPM, Chair of Cambridgeshire and Peterborough Safeguarding Children and Adults Partnership Boards

Aim and Learning Outcomes :

The aim is for delegates to understand at the conclusion of the training.

- What is Fabricated and Induced Illness?
- How to identify and recognise fabricated and induced illness
- How to communicate with other professionals when dealing with Fabricated and Induced Illness cases.
- To be able to identify the appropriate referral pathways

Target Audience: This half day course is for all those professionals (statutory and voluntary) who work predominately or who have regular contact with young people and for those who hold particular responsibilities for safeguarding. Groups 3 and 5. The training is designed for all professionals that work in the field of safeguarding and child protection.

Both Cambridgeshire and Peterborough Practitioners		
Date	Venue	Time
23.04.20	Peterborough Education Conference Centre	09.30-13.00
19.10.20	Young People March Community Centre	09.30-13.00

Safer Recruitment Training

This training will be facilitated by Gaynor Mansell, Independent Trainer

Aim and Learning Outcomes :

The course is intended to help participants.

- Understand how safer recruitment fits within the wider context of safeguarding and promoting the welfare of children and the Every Child Matters agenda; the scale of abuse; some aspects of the characteristics of abusers and the details of how child abusers typically operate within organisations, and relating that to recruitment
- The importance of. planning a recruitment exercise; sending the right messages to potential applicants; following a consistent and thorough process to obtain relevant information about each applicant, and short listing candidates for interview
- Considers the importance of making the right decisions and using structured interviews to help do that, as well as pre-employment checks on the candidate selected for appointment
- Examines the need for on-going awareness and vigilance and considers how organisations can develop and maintain an environment that deters and prevents abuse and challenges inappropriate behaviour

Target Audience: The course is aimed at those who are responsible for recruiting Staff, Volunteers and Trustees to the children's workforce, children's workforce being an umbrella term for anyone who works with children directly or in a supporting role (e.g. admin, cleaning, etc). Groups 4 and 5.

Both Cambridgeshire and Peterborough Practitioners		
Date	Venue	Time
11.03.20	Peterborough Education Conference Centre	09.30-16.30
15.10.20	Peterborough Education Conference Centre	09.30-16.30

Safeguarding Children from Online Abuse

This training will be facilitated by Elizabeth Locke, Safeguarding Board Trainer and Jody Watts, Communications & E-safety Lead, both from the Cambridgeshire and Peterborough Safeguarding Children and Adults Partnership Boards

Aim and Learning Outcomes :

This course will explore online safety, both in terms of professional boundaries and using the internet safely in your work with children and young people, as well as looking at how we can protect children and young people who are faced with a myriad of online threats, including gambling skins, harassment, grooming, exploitation, viral scares and more.

By the end of the session, participants will be able to:

- Identify issues of e-safety that impact on children
- Recognise signs that a child is experiencing or at risk of experiencing abuse online
- Know what to do when concerned about a child's safety online
- Realising the importance of professional boundaries online

Target Audience: This training is for professionals who have regular contact with children and young people. Groups 2-4

Both Cambridgeshire and Peterborough Practitioners		
Date	Venue	Time
17.06.20	Hunts FA	10.00-16.00
22.09.20	The Meadows Community Centre	10.00-16.00
08.12.20	Peterborough Education Conference Centre	10.00-16.00

Safeguarding Children and Working with Eastern and Central European Families

This training will be facilitated by members of the Cambridgeshire and Peterborough Safeguarding Children and Adults Partnership Boards

From the insights of the project "Safeguarding children and working with Eastern and Central European families; Insights and learning from a section of migrant communities across Peterborough, Cambridgeshire and Norfolk", the course will increase participants' levels of knowledge, confidence, and ability to engage effectively with migrant families from Eastern and Central Europe across the regions.

Aim and Learning Outcomes :

To increase participants' levels of knowledge, confidence, and ability to engage effectively with migrant families from Eastern Europe.

By the end of the course delegates will have:

- Increased knowledge of cultural values and how it affects people's behaviour.
- Greater understanding of the significance of culture in the lives of eastern and central European families and the impact on parenting styles and child upbringing.
- Developed a stronger appreciation of the nuances of culture and cultural practices and the impact on child safeguarding.
- Explored strategies to better engage families with an eastern and central European background.

Target Audience: This course is aimed at all front line practitioners and managers working with children, parents or carers.

Both Cambridgeshire and Peterborough Practitioners		
Date	Venue	Time
24.03.20	Hunts FA	09.30-13.30
09.06.20	Cambs FA	09.30-13.30
03.12.20	Peterborough Education Conference Centre	09.30-13.30

SAFEGUARDING ADULTS COURSES

Adults Course Calendar

Date	Course	Venue	Pg
JANUARY 2020			
30.01.20	Introduction to Safeguarding Adults	Hunts FA	25
FEBRUARY 2020			
04.02.20	Working Together to Safeguards Adults at Risk	Hunts FA	26
11.02.20	Self-Neglect and Hoarding	Peterborough Education Conference Centre	27
MARCH 2020			
05.03.20	Safeguarding Adults and the Mental Capacity Act	Hunts FA	27
12.03.20	Safeguarding Adults and Domestic Abuse	Peterborough Education Conference Centre	26
17.03.20	Safeguarding Adults from Online Abuse	Peterborough Education Conference Centre	28
31.03.20	The Lived Experience of the Adult	Hunts FA	25
APRIL 2020			
22.04.20	Introduction to Safeguarding Adults	Cambs FA	25
MAY 2020			
06.05.20	Working Together to Safeguards Adults at Risk	Young People March Community Centre	26
12.05.20	The Lived Experience of the Adult	Cambs FA	25
JUNE 2020			
03.06.20	Self-Neglect and Hoarding	Hunts FA	27
10.06.20	Safeguarding Adults and the Mental Capacity Act	Peterborough Education Conference Centre	27
16.06.20	Introduction to Safeguarding Adults	Peterborough Education Conference Centre	25
July 2020			
15.07.20	Working Together to Safeguards Adults at Risk	Cambs FA	26
SEPTEMBER 2020			
15.09.20	Self-Neglect and Hoarding	Cambs FA	27
30.09.20	Introduction to Safeguarding Adults	Ely Diocese	25
OCTOBER 2020			
06.10.20	Working Together to Safeguards Adults at Risk	Peterborough Education Conference Centre	26
15.10.20	Safeguarding Adults and the Mental Capacity Act	Cambs FA	27
NOVEMBER 2020			
04.11.20	The Lived Experience of the Adult	Peterborough Education Conference Centre	25
11.11.20	Safeguarding Adults from Online Abuse	Hunts FA	28
13.11.20	Safeguarding Adults and Domestic Abuse	Hunts FA	26
DECEMBER 2020			
01.12.20	Safeguarding Adults and the Mental Capacity Act	Hunts FA	27
15.12.20	Introduction to Safeguarding Adults	Peterborough Education Conference Centre	25

An Introduction to Safeguarding Adults

The training will be facilitated by Elizabeth Locke, Safeguarding Board Trainer. Cambridgeshire and Peterborough Safeguarding Children and Adults Partnership Boards

Aims and Learning Outcomes: This course will introduce participants to key aspects of Safeguarding Adults, as set out in the Care Act (2014), including who is considered an adult at risk, and how multi-agency partners should work together to prevent and protect adults at risk from abuse.

By the end of the training session participants will be able to:

- Explain what Adult Safeguarding is and the importance of 'Making Safeguarding Personal'
- Understand the 6 key principles in Safeguarding Adult work
- Identify indicators of abuse and explain what to do when you are concerned about an adult at risk
- Make a referral to report a concern about abuse of an adult at risk
- Identify what constitutes abuse and neglect in relation to adults at risk
- Access the Multi-Agency Safeguarding Adults policies and procedures

Target Audience: This is a basic level training course for those front line staff who may work with adults at risk (Groups 1 and 2). Agencies are encouraged to attend from both the voluntary and statutory sectors and may include roles such as; police officers, police community safety officers, health care officers, social care staff, care providers, community workers, district council workers and anyone interested in learning about how to safeguard adults at risk.

Please note this training is not a replacement for single agency training already provided within some organisations.

Cambridgeshire and Peterborough Practitioners		
Date	Venue	Time
30.01.20	Hunts FA	09.30-12.30
22.04.20	Cambs FA	13.30-16.30
16.06.20	Peterborough Education Conference Centre	10.00-13.00
30.09.20	Ely Diocese	09.30-12.30
15.12.20	Peterborough Education Conference Centre	10.00-13.00

The Lived Experience of the Adult

The training will be facilitated by Elizabeth Locke, Safeguarding Board Trainer, Cambridgeshire and Peterborough Safeguarding Children and Adults Partnership Boards

Aims and Learning Outcomes:

Making Safeguarding Personal, the approach to safeguarding adults described in the Care and Support Statutory Guidance, requires that the lived experience of the adult be considered in all aspects of safeguarding decision making. Evidence from Safeguarding Adults Reviews suggest opportunities to communicate effectively with the adult concerned are still being missed and a full picture of the adults circumstances not achieved.

This is a basic level course and is aimed at those practitioners who work in roles where safeguarding is not a significant part of their role for example, housing officers, PCSO's, licensing and regulatory services. This is not aimed at those practitioners who deal with safeguarding on a regular basis

The workshops will provide an opportunity for practitioners to:

- Explore and understand what we mean by the 'lived experience of the adult'
- Understand what adults tell us they need in a practitioner from local and national research
- Understand behaviour as a form of communication
- Explore how to have conversations about consent to further understand the experience and views of the adult
- Explore resources and tools available to encourage engagement with adults at risk of abuse

Target Audience:

This course is suitable for all practitioners who work with adults at risk and their families in Cambridgeshire and Peterborough

Cambridgeshire and Peterborough Practitioners		
Date	Venue	Time
31.03.20	Hunts FA	10.00-12.30
12.05.20	Cambs FA	10.00-12.30
04.11.20	Peterborough Education Conference Centre	10.00-12.30

Working Together to Safeguard Adults at Risk (formerly known as Safeguarding Adults – Advanced)

The training will be facilitated by Elizabeth Locke, Safeguarding Board Trainer, Cambridgeshire and Peterborough Safeguarding Children and Adults Partnership Boards

Aims and Learning Outcomes: This course will develop and build upon topics presented in the Introduction to Safeguarding Adults training, to look in greater detail at multi-agency responsibilities when it comes to recognising and responding to possible cases of adult abuse. The aim is to improve participants' confidence in recognising potential abuse, promoting safeguarding and the prevention of adult abuse within their organisations.

The course will provide delegates with an opportunity to work through some complex adult abuse scenarios in a multi-agency environment, to help improve working between organisations and support the understanding of roles and responsibilities for safeguarding adults at risk.

At the end of this course, participants will:

- Have a better understanding of the multi-agency dimensions of safeguarding adults including their own and other agencies roles and responsibilities.
- Know how to respond when someone identifies potential indicators of adult abuse
- Be able to discuss how they will support staff and/or volunteers to understand the role they play in preventing abuse of adults with care and support needs
- Identify the partners from other agencies who may need to be involved in safeguarding and describe their safeguarding responsibilities
- Have an increased awareness of methods for overcoming obstacles that may arise with a multi-agency approach to safeguarding

Target Audience: This training builds on content from the introduction to adult safeguarding training and is open to voluntary and statutory personnel who have safeguarding adults at risk within their role or who may be supervising staff working with adults at risk (Groups 2, 3, 4 & 5). Agencies are encouraged to attend from both the voluntary and statutory sectors and may include roles such as; police, police community safety officers, health care staff, social care staff, care providers, community workers, and district council workers.

Cambridgeshire and Peterborough Practitioners		
Date	Venue	Time
04.02.20	Hunts FA	10.00-16.00
06.05.20	Young People March Community Centre	10.00-16.00
15.07.20	Cambs FA	10.00-16.00
06.10.20	Peterborough Education Conference Centre	10.00-16.00

Safeguarding Adults and Domestic Abuse

The training will be facilitated by Tracy Foster, Independent Trainer

Aims and Learning Outcomes: Adults with care and support needs are more likely to experience domestic abuse and to live with abuse for longer before receiving support.

The purpose of this training is to raise awareness of the prevalence of domestic abuse amongst adults with care and support needs and the various forms it might take; increase understanding of the support needs of people experiencing domestic abuse, particularly when combined with other care and support needs; and to encourage partnership working to best meet the needs of an individual.

By the end of this training, participants will be able to:

- Discuss how domestic abuse affects adults with care and support needs
- Identify guidance and legislation relating to supporting adults experiencing domestic abuse
- Identify multi-agency partners who may be involved in safeguarding adults experiencing domestic abuse

Target Audience: Prior to attending this course, all participants are asked to complete the following e-learning course: http://www.cambsdasv.org.uk/website/elearning_modules/92616. It should take about 30 minutes to complete.

Cambridgeshire and Peterborough Practitioners		
Date	Venue	Time
12.03.20	Peterborough Education Conference Centre	09.30-12.30
13.11.20	Hunts FA	10.00-13.00

Self-Neglect & Hoarding

The training will be facilitated by Elizabeth Locke, Safeguarding Board Trainer, Cambridgeshire and Peterborough Safeguarding Partnership Boards

Aims and Learning Outcomes: The Care Act 2014 recognises self-neglect as a type of abuse. Self-neglect refers to a range of behaviours, including neglecting to care for one's health, personal hygiene or surroundings.

This workshop will give practitioners an insight into why people self-neglect and the challenges they face in this area of work and in trying to achieve a positive outcome. We will explore how agencies can work together to provide person centred interventions and support for self-neglect across multiple domains, as well as taking time to explore the issue of Hoarding in more specific detail.

By the end of this training, participant will be able to:

- Identify the signs and indicators of self-neglect
- Explore the issues of why people self-neglect and how understanding this is central to effective, person-centred support
- Explain the benefits of multi-agency approach
- Discuss hoarding, particularly available responses to reduce it and manage the risks it creates

Target Audience: This course is designed for those people who already have a basic knowledge and understanding of safeguarding adults at risk and who have completed a basic/ introductory level of training within the last three years. Agencies are encouraged to attend from both the voluntary and statutory sectors and may include roles such as; police officers, police community safety officers, health care staff, social care staff, care providers, community workers, housing support officers, district council workers and anyone interested in learning about self -neglect and hoarding (Groups 2, 3 & 4).

Cambridgeshire and Peterborough Practitioners		
Date	Venue	Time
11.02.20	Peterborough Education Conference Centre	10.00-16.30
03.06.20	Hunts FA	10.00-16.30
15.09.20	Cambs FA	09.30-16.00

Safeguarding Adults and the Mental Capacity Act

The training will be facilitated by Elizabeth Locke, Safeguarding Board Trainer, Cambridgeshire and Peterborough Safeguarding Children and Adults Partnership Boards

Aims and Learning Outcomes: Making safeguarding personal requires asking the adult concerned what they want to have happen, and how. To do this you need to be confident engaging the adult in this conversation and know how to respond when you think they may lack capacity to decide for themselves. This course aims to improve understanding of the MCA (2005) and how it applies to raising Safeguarding concerns and carrying out safeguarding enquiries.

At the end of this training, participants will be able to:

- Identify how the 5 principles of the MCA should be considered in the context of Making Safeguarding Personal
- Discuss what to do when someone does not have capacity to consent to a Safeguarding concern being raised
- Explain how to identify and respond when there is a concern about an adult's capacity to make a decision in relation to a Section 42 enquiry
- Describe the role of an IMCA in relation to section 42 enquiries
- Explain how the best interest process applies to a Safeguarding enquiry

Target Audience: This training is for voluntary and statutory personnel who have safeguarding adults at risk within their role or who may be supervising staff working with adults at risk (Groups 2, 3, 4). Agencies are encouraged to attend from both the voluntary and statutory sectors and may include roles such as; police officers, police community safety officers, health care staff, social care staff, care providers, community workers, and district council workers.

Cambridgeshire and Peterborough Practitioners		
Date	Venue	Time
05.03.20	Hunts FA	10.00-13.00
10.06.20	Peterborough Education Conference Centre	10.00-13.00
15.10..20	Cambs FA	10.00-13.00
01.12.20	Hunts FA	10.00-13.00

Safeguarding Adults from Online Abuse

This training will be facilitated by Elizabeth Locke, Safeguarding Adults Board Trainer and Jody Watts, Communications & E-safety Lead, both from the Cambridgeshire and Peterborough Safeguarding Children and Adults Partnership Boards

Aims and Learning Outcomes: This course will increase professionals' understanding of their role protecting adults at risk from abuse that can occur or start online, including harassment, grooming, exploitation and scamming. We will discuss harm that can occur, as well as what to look for and how to respond if you think that an adult may be experiencing or putting themselves at risk of online abuse.

By the end of the session, participants will be able to:

- Identify several potential sources of harm that exist with use of the internet
- Describe signs someone is experiencing or at risk of experiencing abuse online and what to do when concerned about an adult's safety online
- Discuss mental capacity and its relevance to online risk taking
- Establish important professional boundaries to protect their own reputation and well-being.

Target Audience: This training is for professionals who have regular contact with adults at risk. Groups 2-4

Cambridgeshire and Peterborough Practitioners		
Date	Venue	Time
17.03.20	Peterborough Education Conference Centre	10.00-16.00
11.11.20	Hunts FA	10.00-16.00

SAFEGUARDING COURSES ACROSS CHILDREN & ADULTS

Courses across Children and Adults Calendar

Date	Course	Venue	Pg
FEBRUARY 2020			
05.02.20	Parenting and Learning Disabilities	Meadows Community Centre Cambridge	35
11.02.20	Are we getting the message across? Fetal Alcohol Spectrum Disorder	Peterborough Education Conference Centre	32
MARCH 2020			
05.03.20	Introduction to the Effects of Domestic Abuse	Peterborough Education Conference Centre	31
25.03.20	Strategies for Affecting Positive Change	Cambs FA	36
APRIL 2020			
22.04.20	Introduction to the Effects of Domestic Abuse	Hunts FA	31
MAY 2020			
01.05.20	Domestic Abuse – Using DASH to Risk Assess the Situation	Hunts FA	31
20.05.20	Drug and Alcohol Awareness	Peterborough Education Conference Centre	33
20.05.20	Drugs and Drug Trends	Peterborough Education Conference Centre	33
JUNE 2020			
01.06.20	Honour Based Violence, Forced Marriage and Safeguarding	Stanton House, Suite 1	32
12.06.20	Female Genital Mutilation (FGM)	Hunts FA	35
JULY 2020			
02.07.20	Strategies for Affecting Positive Change	Peterborough Education Conference Centre	36
SEPTEMBER 2020			
15.09.20	Are we getting the message across? Fetal Alcohol Spectrum Disorder	Hunts FA	32
16.09.19	Impact of Substance Misusing Adults on Children (Part 1)	Hunts FA	34
OCTOBER 2020			
01.10.20	Introduction to the Effects of Domestic Abuse	Cambs FA	31
07.10.20	Domestic Abuse – Using DASH to Risk Assess the Situation	Peterborough Education Conference Centre	31
08.10.20	Strategies for Affecting Positive Change	Hunts FA	36
21.10.19	Drug and Alcohol Awareness	Hunts FA	33
NOVEMBER 2020			
04.11.20	Parenting and Learning Disabilities	Hunts FA	35
18.11.20	Drug and Alcohol Awareness	Peterborough Education Conference Centre	33
18.11.20	Drugs and Drug Trends	Peterborough Education Conference Centre	33
DECEMBER 2020			
02.12.20	Implication of Substance Misusing Adults on Children (Part 2)	Hunts FA	34
10.12.20	Strategies for Affecting Positive Change	Meadows Community Centre Cambridge	36

An Introduction to the Effects of Domestic Abuse

This training will be facilitated by Tracy Foster, Independent Trainer

Aims and Learning Outcomes: To enhance practitioners knowledge of domestic abuse and its effects on individuals, families, children and young people.

By the end of the training session participants will be able to.

- Understand what is meant by the term domestic abuse
- Consider the effect and impact of domestic abuse on children, young people and adults
- Be aware of local services that are available to families experiencing domestic abuse

Target Audience: Practitioners and Volunteers working with children and families who may be affected by domestic abuse. This course is only available for those who have previously completed Introductory Safeguarding Training, run either by PSCB or their own agency.

Both Cambridgeshire and Peterborough Practitioners		
Date	Venue	Time
05.03.20	Peterborough Education Conference Centre	09.30-16.30
22.04.20	Hunts FA	09.30-16.30
01.10.20	Cambs FA	09.30-16.30

Domestic Abuse – Using DASH to Risk Assess the Situation

This training will be facilitated by Tracy Foster, Independent Trainer

Aims and Learning Outcomes: To have a thorough understanding of how to use the DASH – Risk Assessment tool and to analyse the results of the assessment.

By the end of the training session participants will be able to.

- Be confident in completing a DASH
- Have a greater understanding of the impact domestic abuse has upon all victims
- Be confident in referring appropriate cases to MARAC
- Be able to improve working where domestic abuse is a feature within families

Target Audience: Practitioners, Managers and Volunteers who work with children, young people and their parents / carers and are involved in undertaking S47 enquiries or contribute to assessing, planning, intervening and reviewing needs of children where there are safeguarding concerns.

This course is only available to people who have previously completed the “An Introduction to the Effects of Domestic Abuse” course.

Both Cambridgeshire and Peterborough Practitioners		
Date	Venue	Time
01.05.20	Hunts FA	09.30-16.30
07.10.20	Peterborough Education Conference Centre	09.30-16.30

Honour Based Violence, Forced Marriage and Safeguarding

This training will be facilitated by Sally Giddins, Practice Improvement Development Lead, Cambridgeshire and Peterborough Safeguarding Children and Adults Partnership Boards

Aims and Learning Outcomes: This half day focuses on 'Forced Marriage' in the context of children, young people and vulnerable adults. This course is for those practitioners who want to know more about; 'forced Marriage' and 'honour based violence' within the wide arena of violence against women, children and young people; how to identify signs of forced marriage and how to make appropriate referrals to safeguard children and vulnerable adults.

At the end of the session practitioners will have

- Gained knowledge and understanding of the issues related to 'Forced Marriages' within families.
- Understood the difference between arranged marriages and forced marriages.
- Understood what 'Honour Based Violence is'.
- Be able to identify the signs and indicators of a forced marriage.
- Know who to contact and how to make referrals to the appropriate supporting and investigating agencies in terms of safeguarding.

Target Audience: This course is primarily for those professionals (statutory and voluntary) who either work predominately or who have regular contact with children and young people and their families; for those who hold particular responsibilities for safeguarding (children and vulnerable adults) and for those who hold positions as professional advisors. Groups 2-5

Both Cambridgeshire and Peterborough Practitioners		
Date	Venue	Time
01.06.20	Stanton House, Huntingdon	09.30-12.30

Are we getting the message across? Fetal Alcohol Spectrum Disorder

This training will be facilitated by Dr Ges Gregory, Consultant Community Paediatrician

Aims and Learning Outcomes: Fetal Alcohol Spectrum Disorders (FASD) is an umbrella term for a range of disorders in children caused by maternal alcohol use during pregnancy. The implications are potentially devastating for the child's learning, behaviour, speech and ability to interact with others and to function independently.

To provide an awareness of what FASD are:

- To enable participants to give 'evidence based advice' and information to services users about FASD.
- To help participants understand the effects of alcohol and substance misuse on the development of the foetus. To enable participants in recognising FASD and getting the earliest possible formal intervention.

Target Audience: This is a two hour course for those professionals (voluntary and statutory) who work with children and young people and their parents/carers regularly and for those who hold particular responsibilities for safeguarding. Groups 2,3, 4 and 5. Frontline Professionals working with families are encouraged to attend as are those staff who complete assessments and child protection investigations.

Both Cambridgeshire and Peterborough Practitioners		
Date	Venue	Time
11.02.20	Peterborough Education Conference Centre	10.00-12.00
15.09.20	Hunts FA	10.00-12.00

Drug & Alcohol Awareness

This training will be facilitated by members of CGL Peterborough, CGL Cambridgeshire and/or Cambridgeshire Child and Adolescent Substance Misuse Service (CASUS)

Aims and Learning Outcomes:

- An awareness of common drugs, and what they look like.
- A basic knowledge of the physical, psychological and social effects of drugs and alcohol.
- Ability to recognise drug/alcohol misuse.
- Awareness of own attitudes to drug/alcohol use/misuse and how these may impact on your work with adults or young people.
- Awareness of current trends in relation to use and misuse.
- Understanding of treatment options for adult substance misusers.
- Awareness of local specialist agencies working with adults and young people and when and how to refer to them.
- Increased confidence in dealing with drug/alcohol issues they may come across in their roles.
-

Target Audience: This is a 3 hour course for those professionals (voluntary and statutory) who work with children and young people and their parents/carers regularly who require a basic understanding of drugs and alcohol their misuse and their effects in terms of Safeguarding.

Both Cambridgeshire and Peterborough Practitioners		
Date	Venue	Time
20.05.20	Peterborough Education Conference Centre	09.30-12.30
21.10.20	Hunts FA	09.30-12.30
18.11.20	Peterborough Education Conference Centre	09.30-12.30

Drugs & Drugs Trends: Psychoactive Substance Act 2016 & Recent Local Patterns in Substance Use of Adults & Young People

This training will be facilitated by members of AGL Aspire

Aims and Learning Outcomes:

For Participants to have

- A greater understanding of New Psychoactive Substances (NPS), how are they used & their effects.
- An awareness of national and local patterns of NPS, and other drug use and the specialist treatment agency response.
- Knowledge of how to reduce the harm of drug use, in a safeguarding context

Target Audience: This is a 3 hour course for those professionals (voluntary and statutory) who work with children and young people and their parents/carers regularly (Group 2); who require a basic understanding of drugs and alcohol their misuse and their effects in terms of Safeguarding. The Training has been commissioned by the Cambridgeshire and Peterborough Public Health Joint Commissioning Unit

Both Cambridgeshire and Peterborough Practitioners		
Date	Venue	Time
20.05.20	Peterborough Education Conference Centre	13.00-16.00
18.11.20	Peterborough Education Conference Centre	13.00-16.00

Impact of Substance Misusing Adults on Children (Part 1)

This training will be facilitated by Tracy Thompson - CGL Cambridgeshire and Suzanne Hare from the Cambridgeshire Child and Adolescent Substance Misuse Service

Aims and Learning Outcomes:

By the end of the session, participants will be able to :

- Understand how children may be affected by parental substance misuse
- Understand how parenting capacity may be compromised by substance misuse
- Refer to relevant research and resources to work with children and young people
- Approach assessments with greater confidence

Target Audience: This is a the first half day introductory course, for all those professionals (voluntary and statutory) who work regularly with children and families, and/or adults who are parents/carers and for those who have a greater degree of role accountability and responsibility for safeguarding children's welfare (Groups 2,3 and 4).

Before attending this course we recommend the Parental Substance Misuse: Understanding the Impact on Children e-learning which can be found at <http://www.scie.org.uk/assets/elearning/parentalsubstancemisuse/website/module2/main.html>

Both Cambridgeshire and Peterborough Practitioners		
Date	Venue	Time
16.09.20	Hunts FA	09.30-13.00

Implications of Substance Misusing Adults on Children (Part 2)

This training will be facilitated by Tracy Thompson - CGL Cambridgeshire and Suzanne Hare from the Cambridgeshire Child and Adolescent Substance Misuse Service

Aims and Learning Outcomes:

To enable practitioners to consider the challenges of working with families where parental substance misuse is an issue and identify best practice approaches.

By the end of the session, participants will be able to:

- Have greater confidence in discussing substance misuse with families
- Recognise when an assessment is needed, and identify different resources to support the assessment process
- Make balanced judgements about any action necessary to safeguard children
- Understand the ongoing support needs of children
- Identify the roles and responsibilities of others within the professional network

Professionals MUST complete the Impact of Substance Misusing Adults on Children (Part 1) prior to attending this course.

Before attending this course we recommend the Parental Substance Misuse: Implications for Practice e-learning which can be found at <http://www.scie.org.uk/assets/elearning/parentalsubstancemisuse/website/module3/main.html>

Target Audience: This is the second half day course, following the initial introductory course of **Parental Substance Misusing Adults on Children (Part 1)**. This course is for all those professionals (voluntary and statutory) who work regularly with children and families, and/or adults who are parents/carers and for those who have a greater degree of role accountability and responsibility for safeguarding children's welfare (Groups 2,3 and 4).

Both Cambridgeshire and Peterborough Practitioners		
Date	Venue	Time
02.12.20	Hunts FA	09.30-13.00

Parenting and Learning Disabilities

The training will be facilitated by Maggie Labib, Louisa Barnett and Maria Komiliou, from the Cambridge City Learning Disability Partnership from the Cambridgeshire and Peterborough Foundation Trust.

Aims and Learning Outcomes:

For Practitioners to:-

- To understand what a Learning Disability is and how it might affect parenting ability.
- To gain information of the role of the Learning Disability with regards to parenting and Learning Disability.
- To explore ways of working with parents who have a Learning Disability in helping them to safeguarding their children.
- To be aware of good practice when working with parents with a Learning Disability.

Target Audience: This half day workshop is primarily for those professionals (statutory and voluntary) who either work predominately or who have regular contact with children and young people and for those who hold particular responsibilities for safeguarding and for those who hold positions as professional advisors. Groups 2-5

Both Cambridgeshire and Peterborough Practitioners		
Date	Venue	Time
05.02.20	The Meadows Community Centre	09.30-12.30
04.11.20	Hunts FA	09.30-12.30

Female Genital Mutilation (FGM)

The training will be facilitated by Dr. Emilia Wawrzkowicz, Designated Doctor and Consultant Paediatrician

It is recorded that; the World Health Organisation estimates that 3 million girls undergo some form of Female Genital Mutilation (FGM) each year (Dorekenoo et al 2007). Female Genital Mutilation is illegal in the UK but still affects a significant number of British girls and foreign nationals from a variety of cultures.

Aims and Learning Outcomes: To introduce the practice of FGM in girls and women, exploring why it is practiced, the different types of FGM, its prevalence and its acceptance, along with how to recognise the signs and indicators and make appropriate referrals.

Target Audience: This workshop is aimed at; all those professionals (voluntary and statutory) who work regularly with children and families, and / or adults who are parents /carers and for those who have a greater degree of role accountability and responsibility for safeguarding children's welfare, for fostering and adoption and for managers who have responsibility for staff supervision (Groups 2, 3 and 4).

Both Cambridgeshire and Peterborough Practitioners		
Date	Venue	Time
12.06.20.	Hunts FA	10.00-12.00

Strategies for Affecting Positive Change

The training will be facilitated by Elizabeth Locke, Safeguarding Adults Board Trainer, Cambridgeshire and Peterborough Safeguarding Children and Adults Partnership Boards

Aims and Learning Outcomes:

The aim of this training is to improve participants' confidence with having difficult conversations with service users by reviewing core communication skills, discussing obstacles to clear, open communication and ways to overcome them, and providing an opportunity to exchange different perspectives, tools, and models regarding difficult conversations in a multi-agency setting.

By the end of this training, participants will be able to:

- Describe good core communication skills, including active listening, questioning, and non-verbal communication skills.
- Explain why it is important to be confident and able to ask difficult questions. Difficult questions may include asking about: safeguarding concerns, seeking consent, making referrals, personal experiences of service users and other sensitive topics.
- Discuss tools and models designed to facilitate difficult conversations and have the confidence to use them when working with children, adults at risk, and their families.
- Apply the skills and techniques practiced on the course to their professional role working with children, young people and adults at risk.

Target Audience: This is a **basic** level training course for those front line staff who may work with children, young adults, or adults at risk (Groups 1 and 2). Agencies are encouraged to attend from both the voluntary and statutory sectors.

Please note this training is not a replacement for single agency training already provided within some organisations

Both Cambridgeshire and Peterborough Practitioners		
Date	Venue	Time
25.03.20	Cambs FA	10.00-13.00
02.07.20	Peterborough Education Conference Centre	10.00-13.00
08.10.20	Hunts FA	10.00-13.00
10.12.20	The Meadows Community Centre	10.00-13.00

**CAMBRIDGESHIRE AND PETERBOROUGH
SAFEGUARDING PARTNERSHIP BOARD
WORKSHOPS**

ADULTS WORKSHOPS

Findings from the latest ASPB Safeguarding Adult Reviews (SARs,) safeguarding board multi-agency audit activity and new messages from the adult safeguarding arena:

This is a two hour workshop aimed at front line practitioners from statutory and non-statutory safeguarding agencies. We will explore how we can embed the 'learning' into front line practice to ensure the safety of the adults at risk, their carers and families that we work with.

These workshops are FREE to all practitioners who work with adults at risk and their families

CHILDREN'S WORKSHOPS

This is a two hour workshop which will focus on findings from the latest CSPRs Child Safeguarding Practice Reviews (formally known as Serious Case Reviews (SCRs)) and the safeguarding board audit activity on Child Sexual Abuse, Cultural Competence, Child Neglect and Local Authority Designated Officer cases.

Aimed at front line practitioners from statutory and non-statutory safeguarding agencies. We will explore how we can embed the 'learning' into front line practice to ensure the safety of the children, young people and families that we work with.

These workshops are FREE to all practitioners who work with children, young people and their families

It is expected that both children's and adults' workshops will take place throughout the year per year and will replace the refresher courses.

Flyers will be sent out when dates are confirmed.

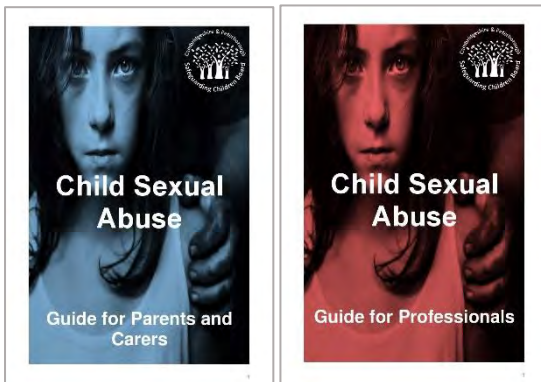
The workshops will be facilitated by members of the Cambridgeshire and Peterborough Safeguarding Children and Adults Partnership Boards

Once workshops have been advertised, bookings for all workshops will be made by visiting

www.safeguardingcambspeterborough.org.uk/availabletraining/

LEAFLETS AND RESOURCES

Child Sexual Abuse



Female Genital Mutilation



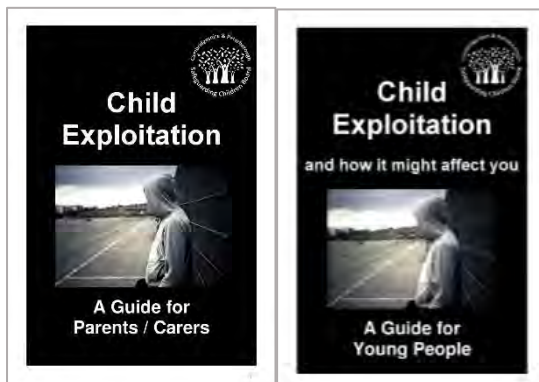
Online Safety



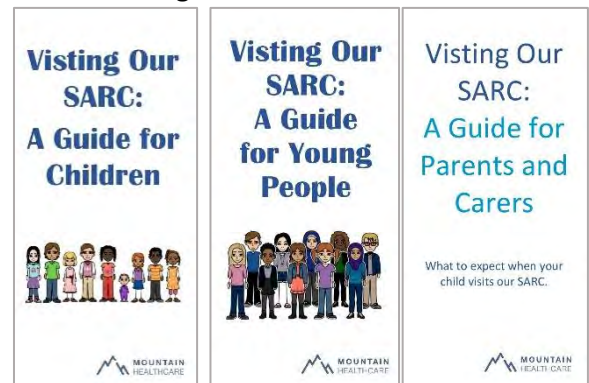
Child Sexual Exploitation



Criminal Exploitation



Visiting Our SARC



IF YOU WOULD LIKE FURTHER INFORMATION
or
MORE LEAFLETS PLEASE SEE OUR WEBSITE AT:-

<http://www.safeguardingcambspeterborough.org.uk/children-board/about/resources/>

or scan the QR Code





Cambridgeshire and Peterborough Safeguarding Adults and Children Partnership Board

Training Contact Details

All Training Enquiries to:

Sand Martin House
Bittern Way
Fletton Quays
Peterborough
PE2 8TY

or contact

Training Business Support on
01733 863747

Safeguardingboardstraining@cambridgeshire.gov.uk

To view our current brochure and book onto our courses, please visit at
<http://www.safeguardingcambspeterborough.org.uk/availabletraining/>